


Lloyd's List Intelligence 

AIS SeaOrbis

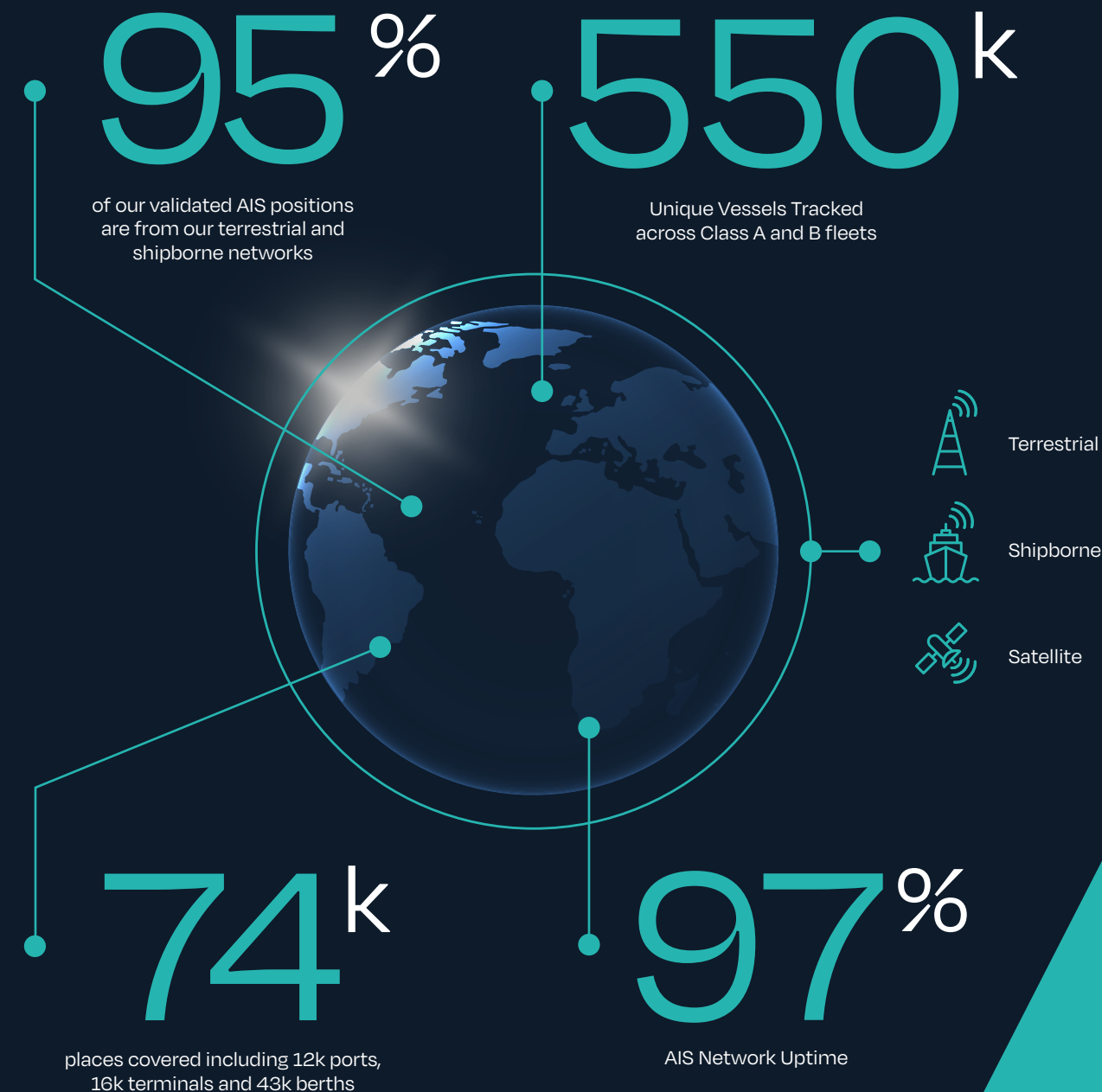
Unrivalled vessel
tracking intelligence



Introducing AIS SeaOrbis

AIS SeaOrbis is more than just raw AIS data, it's the contextualised vessel movements intelligence you need to make data-driven decisions for your business

By combining terrestrial, shipborne, satellite, and human intelligence with our global, geospatial database we capture near-shore and off-shore vessel movements, overlaying unique AI models to provide pin-point accurate insight on historic, current, and predicted vessel movements.



Unrivalled Data Quality

Big data is everywhere, no more so than in the maritime industry, and cutting through the sheer volume to get to the information you need can seem like a daunting task.

It's easy to waste time collating, checking, and organising data from different sources to get it in the right format to act on.

We've done the hard work for you, having processed, and verified data from over 3,000 sources. Our commitment to data quality and continual improvements to our analytics model enable you to track the global shipping fleet effectively while safeguarding your operations. Governed by an ISO9001 accredited framework, our AIS data models deliver exceptional quality and consistency.

Our COACT framework delivers on 5 key areas, and in combination, ensures our AIS data is the best in class...

Consistency

Access the most comprehensive historical AIS database, trusted since 2007 as the backbone of maritime analysis and decision-making, with flexible one-off or continuous subscription options.

Accuracy

Receive only the most accurate, validated AIS positions with our SmartMatch AI technology—deduplicated and ready to use from terrestrial, satellite, and shipborne sources, ensuring you get the right information at the right time for faster, smarter decisions.

Timeliness

Make faster decisions with real-time data updates via automated processing, and validation, delivering clean, timely insights without delay.



Origin

Trusted as the original source, our comprehensive AIS database is powered by our proprietary terrestrial network and exclusive Lloyd's Agency partnership, making us the foundation of reliable maritime data and insights.

Completeness

Get the complete picture with 95% uptime, end-to-end voyage coverage, and exclusive access to key ports through our proprietary network and the Lloyd's Agency, ensuring you never miss an update.

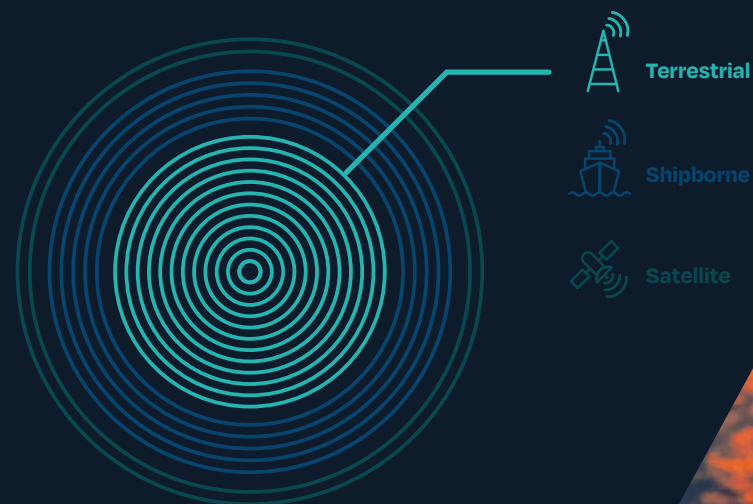
We have a superior terrestrial network that we own and manage...

We staff, manage, and maintain our own terrestrial AIS network covering 12,000+ ports, which provides more than 80% of all our AIS positions through our exclusive partnership with the Lloyd's Agency Network

Owning our own network means we can:

- Prioritise coverage in key strategic locations and provide continually expanding coverage.
- Check, validate, and correct data at source, and continuously enhance our data and reduce false positives.
- Maintain a market-leading uptime of our hosted proprietary AIS network in excess of 95%

AIS SeaOrbis: unparalleled coverage



...our unique shipborne AIS network that closes the gaps....

Maritime operations are fluid, crossing borders, seas, and zones where terrestrial coverage isn't always enough. This is where our unique shipborne AIS network steps in — built on a broader range of shipborne AIS data partnerships — ensuring that critical data gaps are filled, even in high-traffic or remote areas

Seamless Coverage

Shipborne receivers reduce blind spots, providing vital continuity in areas where terrestrial AIS cannot reach.

Increased Frequency

Delivering more frequent vessel position updates, enabling near real-time visibility for faster decision-making.

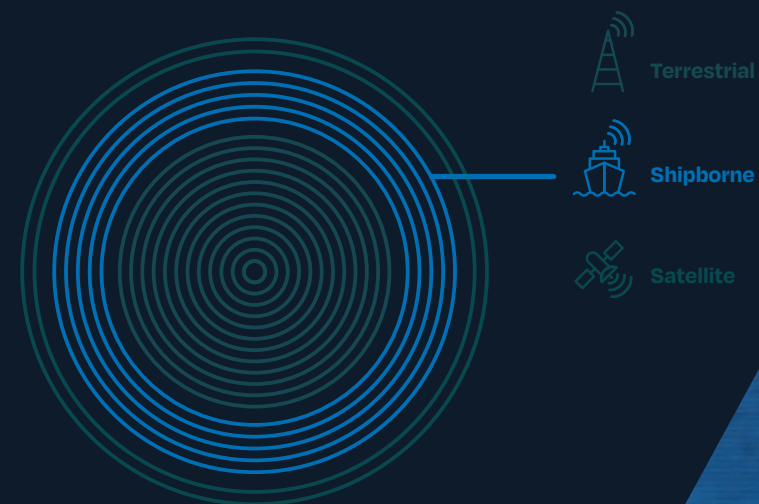
Enhanced Reliability

Improved data quality through fewer message collisions and reduced latency, particularly in high-traffic areas.

Better Context

Additional data points from congested zones offer richer insights into vessel movements.

AIS SeaOrbis: unparalleled coverage



...and eyes in the skies through our partners

Sometimes the only way to track vessels is from above. With stable and secure satellite partners, we ensure the longevity, security, and stability of our data streams, maximising global coverage and giving you visibility in areas not covered by terrestrial or shipborne networks

Extended Reach

Provides essential coverage in remote and deep-sea regions to complement terrestrial and shipborne AIS

Enhanced Context

Adds depth to maritime intelligence by capturing data from areas that are traditionally harder to monitor

Integrated Insight

Works seamlessly with terrestrial and shipborne AIS to ensure a holistic view of vessel movements

AIS SeaOrbis: unparalleled coverage



AIS SeaOrbis, A complete view of global maritime activity



Verified by humans

Increase efficiency and act on clear insight with a comprehensive understanding of shipping patterns and real-time operations

Our exclusive partnership means:

- Insight and intelligence from over 250 Lloyd's Agents, and a further 300 sub-agents in 170 countries.
- Our AIS network, hosted by the Lloyd's Agents, is present in most of the world's trading ports and in strategic and sensitive locations where other providers do not have access.
- We have an enhanced ability to detect AIS spoofing and other deceptive shipping practices thanks to real-life sightings and unrivalled station uptime.

LLOYD'S

Agency

"LLI has one of the most precise and accurate terrestrial AIS networks, because they can benefit from a historical association with the Lloyd's agents network"

Software provider to the maritime industry and Lloyd's List Intelligence customer

The only geospatial database **you will ever need**

Our geospatial database is the most structured and granular port database available. It uses a clear hierarchy of port locations and more intricate 'polygons' to provide complete coverage and unparalleled accuracy.

Our Geospatial database allows you to:

- Maximise the value of AIS and vessel movements data.
- Develop systems that increase efficiency, reduce costs, boost functionality, and improve your ability to acquire and retain customers.
- Understand vessel movements covering global ports, sub-ports, terminals, berths and STS areas in unparalleled detail.

"We compared the ETAs that carriers were sharing against the predictive ETAs that Lloyd's List Intelligence had. Lloyd's List Intelligence had 85-90% accuracy against what the carriers had."

Large manufacturer and Lloyd's List Intelligence customer

AIS Data Options

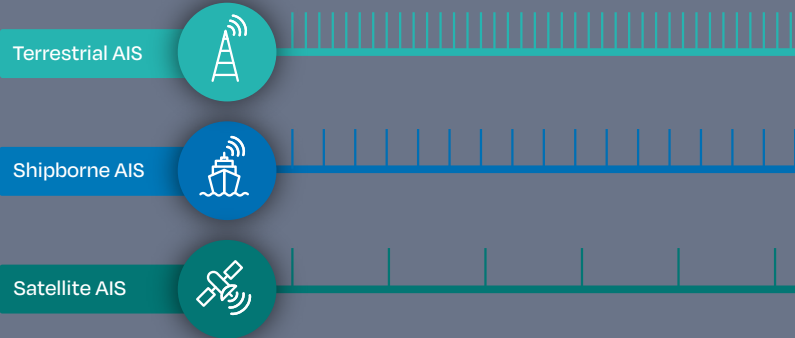
Live Positions

High frequency, granular updates of latest unique vessel positions across each of our terrestrial, shipborne and satellite sources



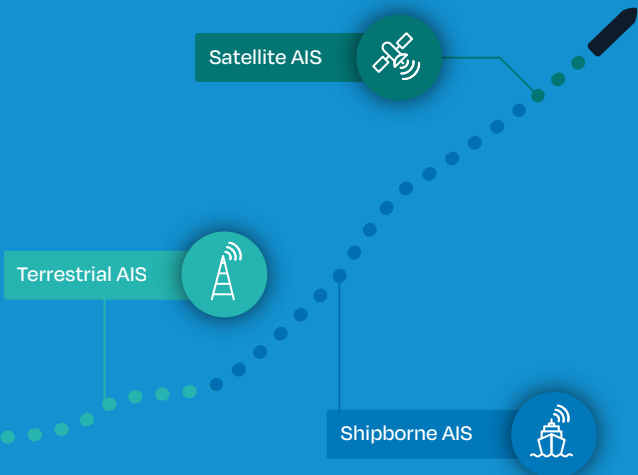
Raw Historical Positions

Full 7-day historical archive of granular unique vessel positions and movements across each of our terrestrial, shipborne and satellite sources



Historical Positions Archive

Highly accurate and derived view of historical vessel positions and movements dating back to 2010 that leverages the combined power of all three AIS sources



Powerful data solutions in the format that's right for you

Delivered directly into your workflow via Snowflake, Rest APIs, CSV data delivery or TCP stream

On-demand Access

Snowflake and our APIs provide flexible and continuously updated data delivery solutions providing an efficient and customisable alternative to traditional file delivery

Generate Faster Insights

Our AIS data is updated and delivered in real-time helping you gain a competitive edge by identifying opportunities and risks faster

Seamless Integration

Streamline your workflow and improve operational efficiency by integrating our data directly into your analytics workflows reducing the need for manual data pulls

Bespoke Delivery

Customisable data extracts with data elements, structure and frequency tailored to your needs

Historical Analysis

Continuous and consistent historical AIS data going back to 2010 can inform historical vessel movement and trade lane trends

Contact us now to experience the power of AIS **SeaOrbis**

America Tel: +1 646 477 7590

EMEA Tel: +44 (0)20 7017 5392

APAC Tel: +65 6028 3988

[Lloydslistintelligence.com](https://lloydslistintelligence.com)

Transparent and actionable maritime data and analytics
powering decisions that drive the safe, efficient, and
lawful movement of seaborne trade.

Copyright © 2024 Maritime Insights & Intelligence Limited. Maritime Insights & Intelligence Limited is a company registered in England and Wales with company number 13831625 and address c/o Hackwood Secretaries Limited, One Silk Street, London EC2Y 8HQ, United Kingdom. Lloyd's List Intelligence is a trading division of Maritime Insights & Intelligence Limited.

Lloyd's is the registered trademark of the Society incorporated by the Lloyd's Act 1871 by the name of Lloyd's.

